

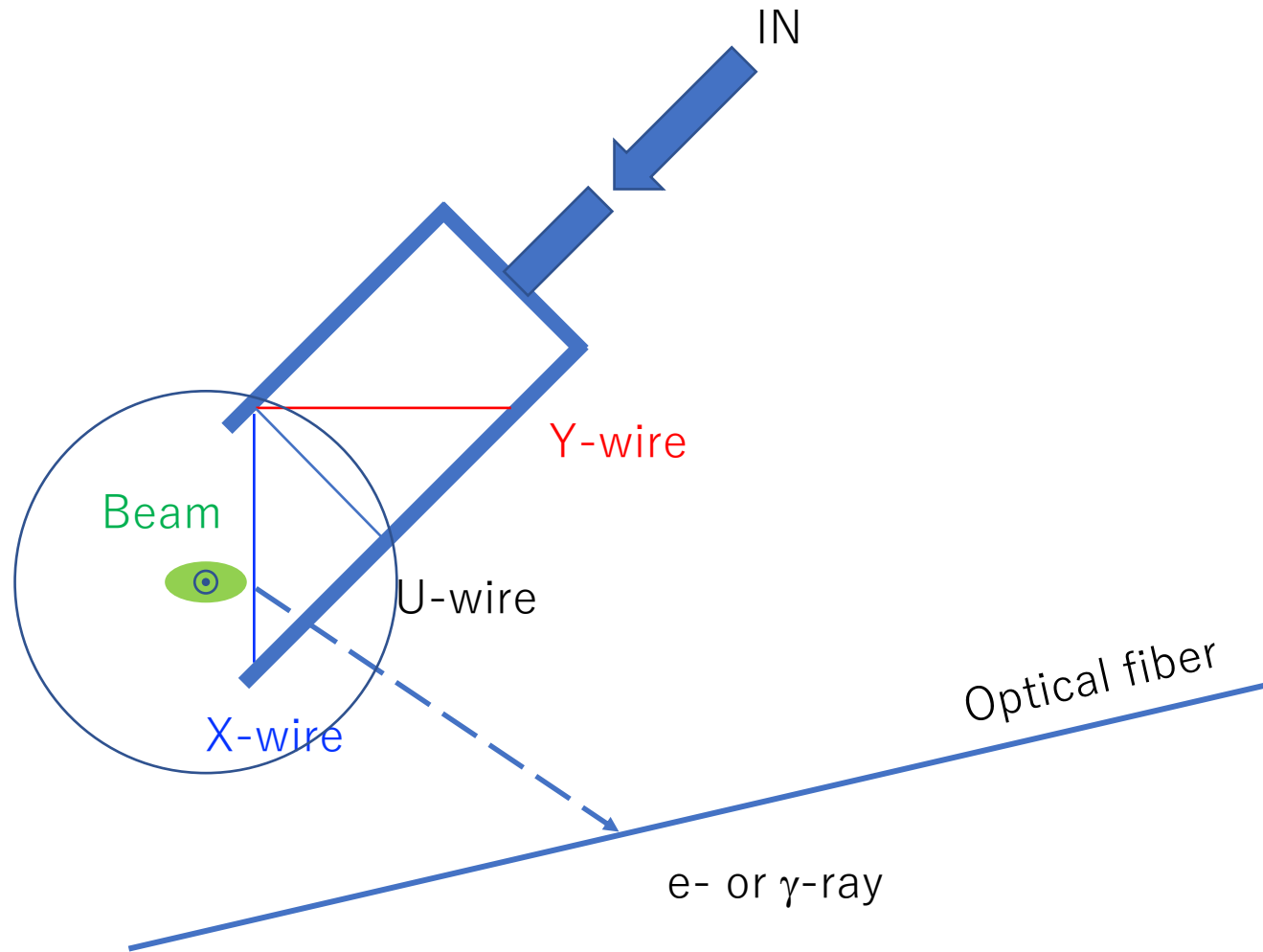
Profile at the wire scanner at e- BT

2020.7.16

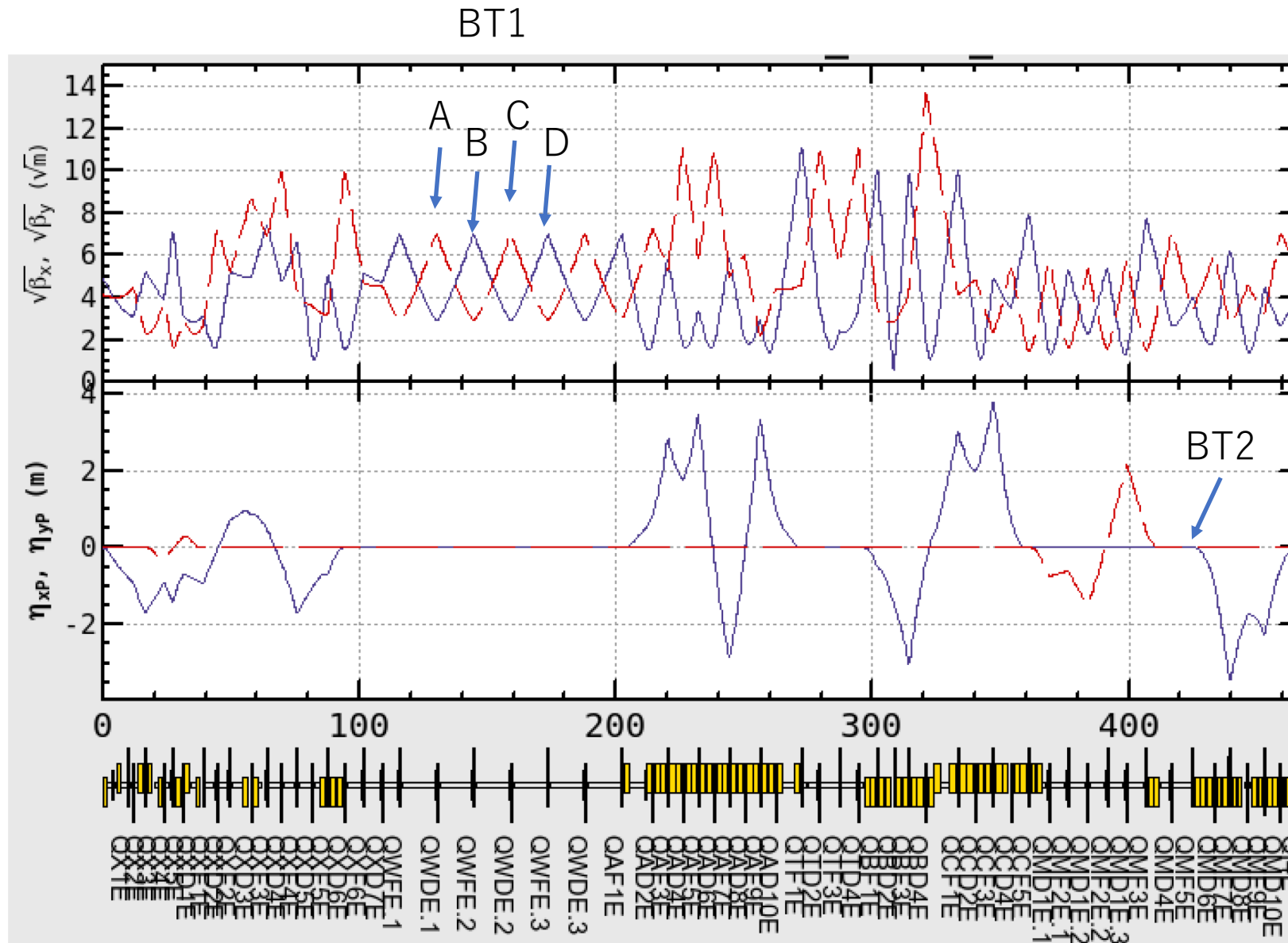
MAC

N.lida

Wire scanner

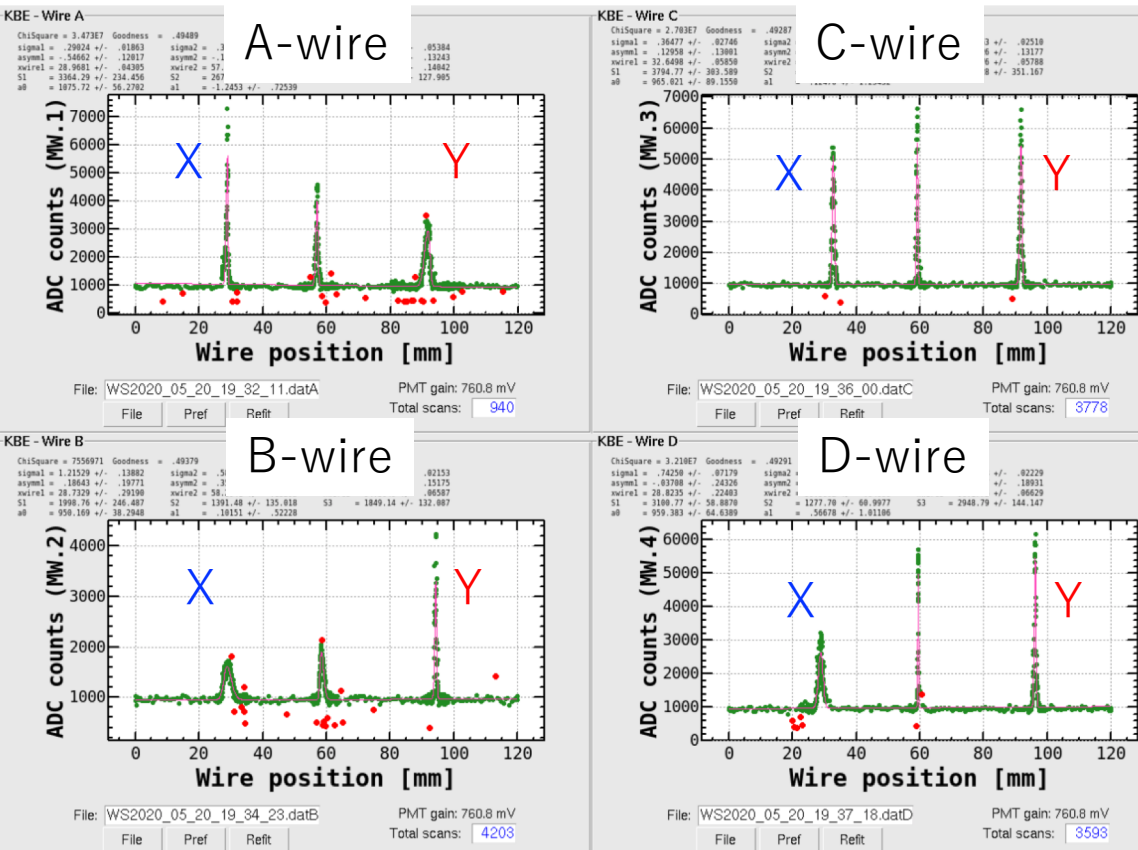


Optics of e- BT



Profile at e- BT1

Zoom

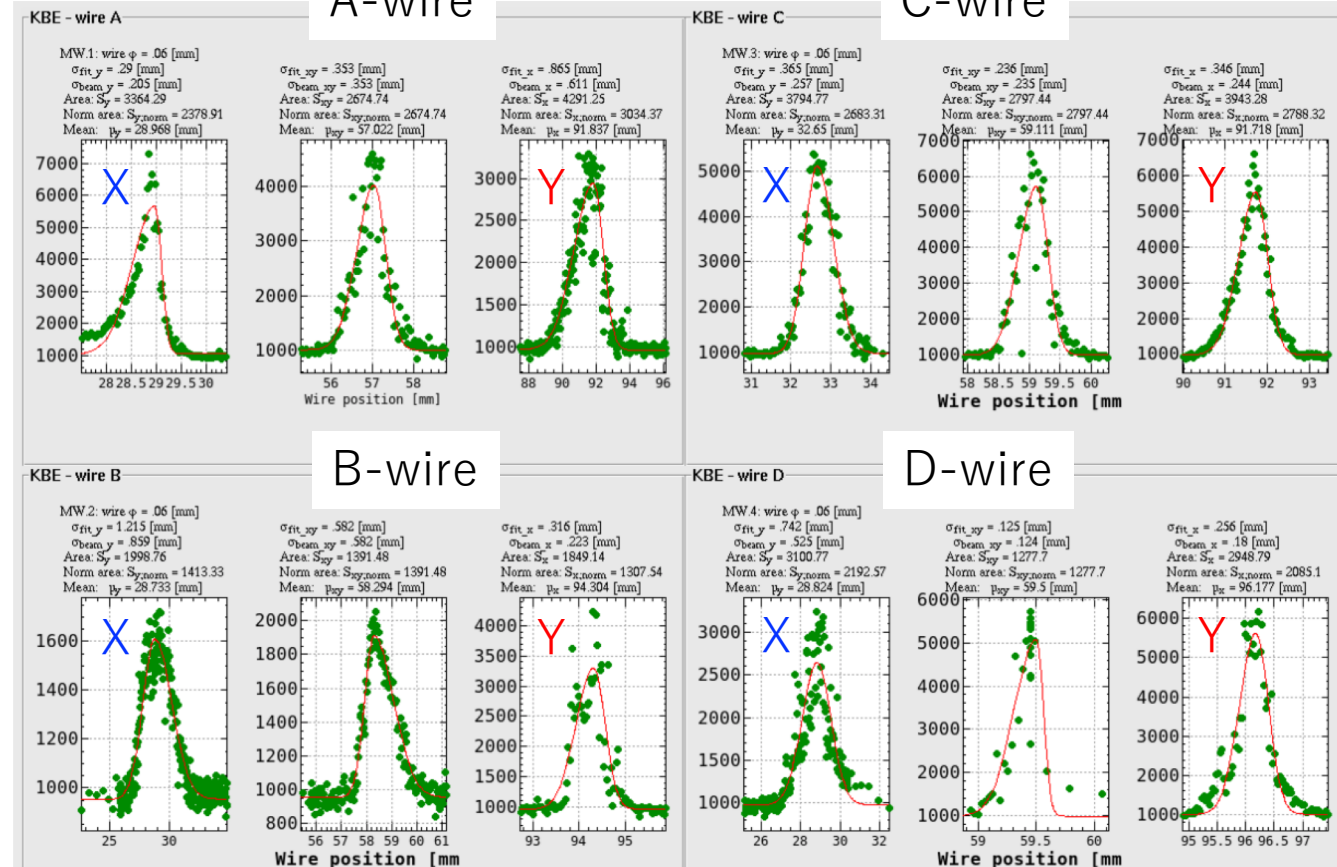


A-wire

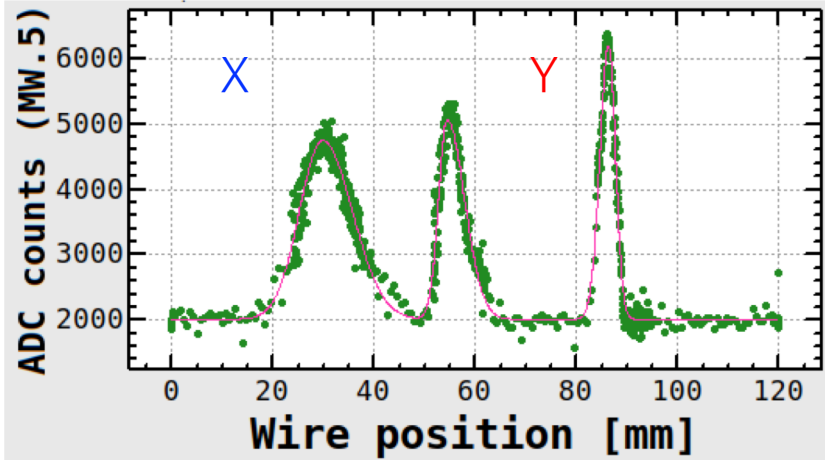
C-wire

B-wire

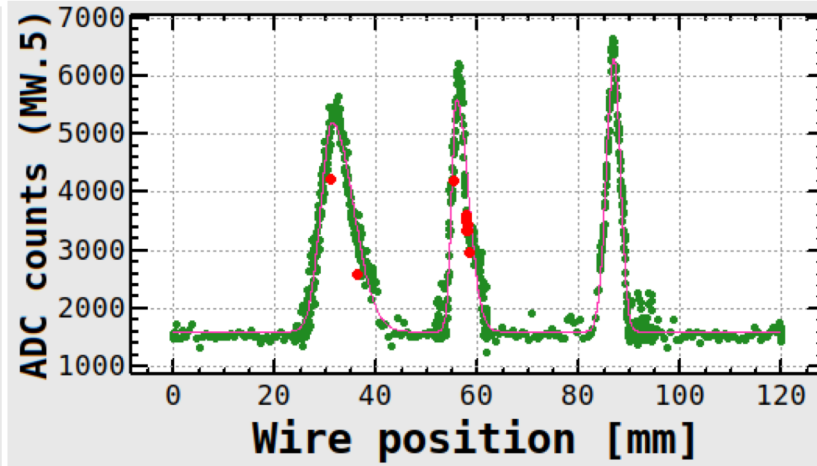
D-wire



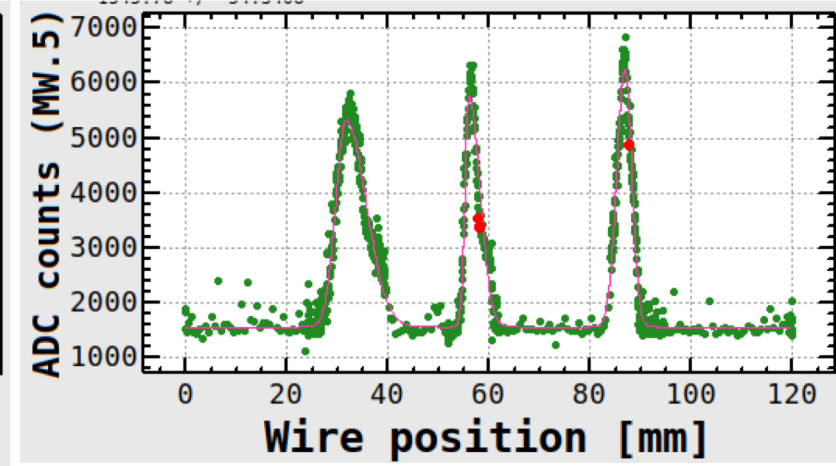
Profile at e- BT2 (Q-scan of X direction)



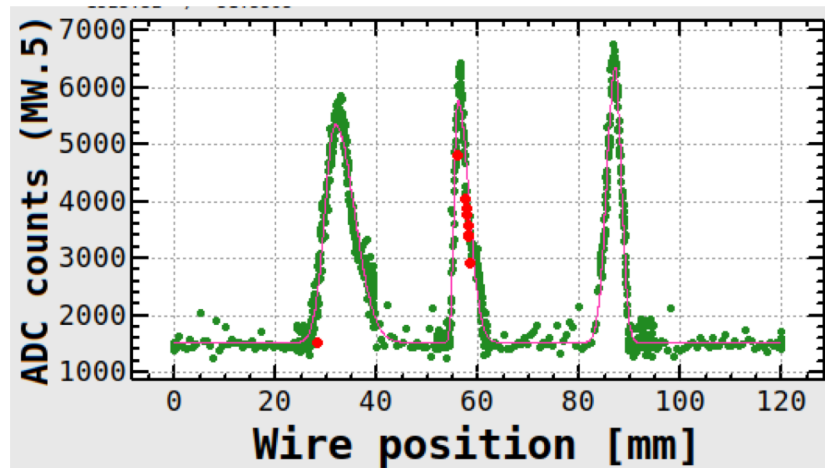
K1=.296



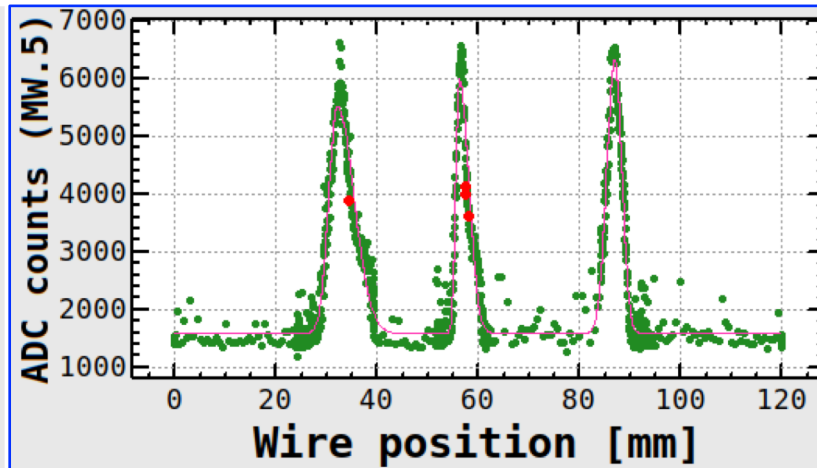
K1=.232



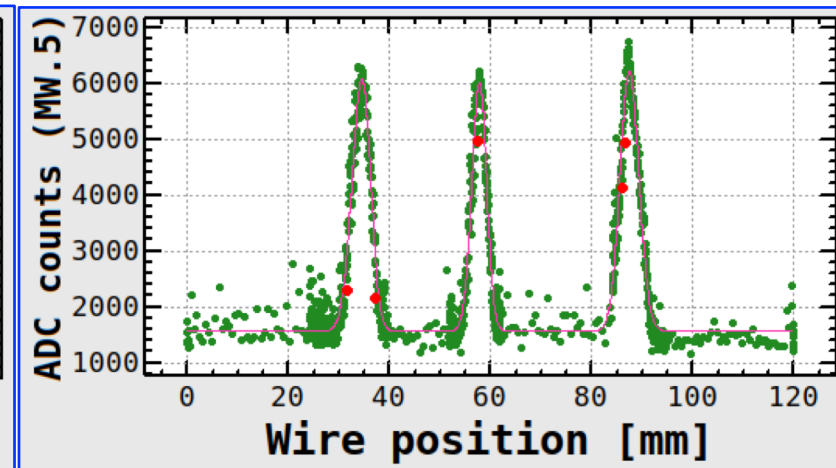
K1=.235



K1=.221



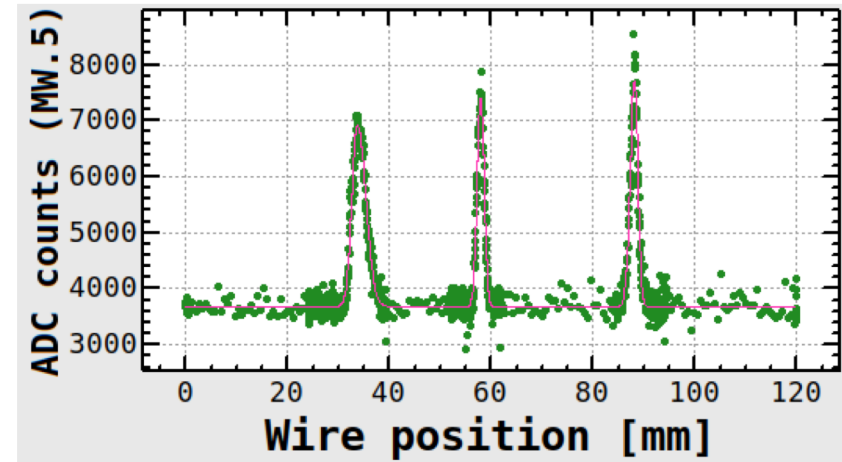
K1=.212



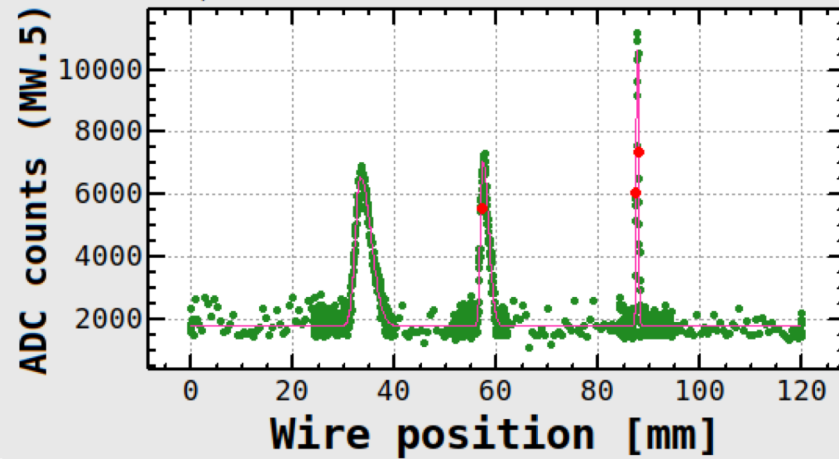
K1=.148

K1 for operation=.185

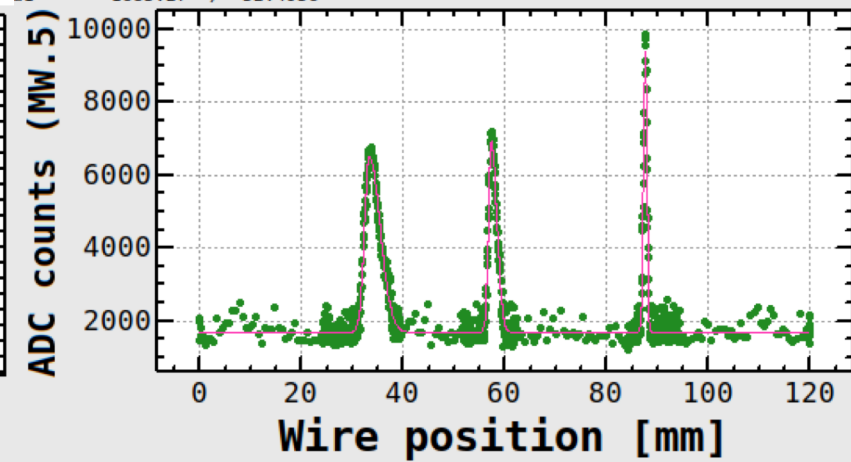
Profile at e- BT2 (Q-scan of Y direction)



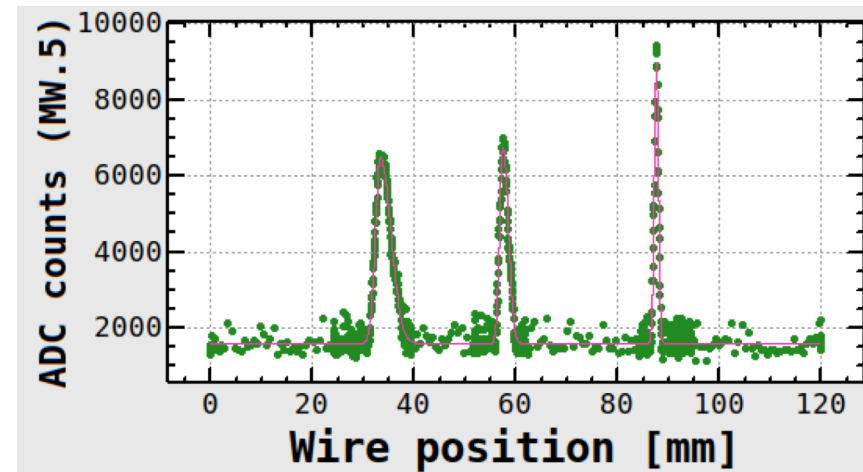
K1=-.284



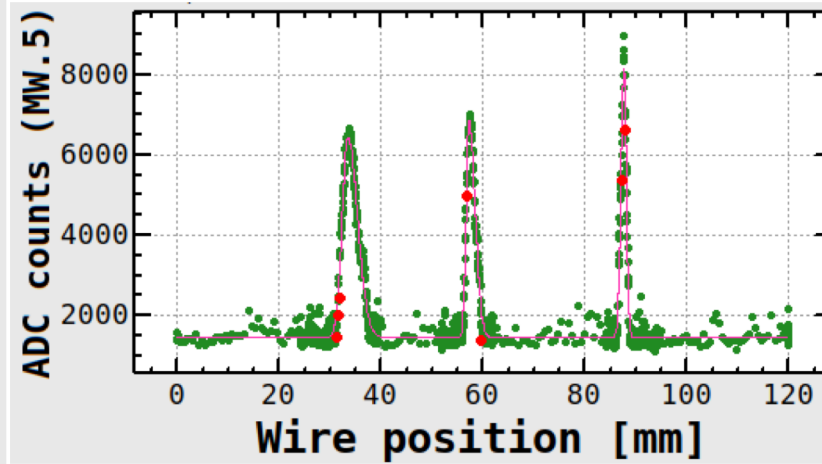
K1=-.231



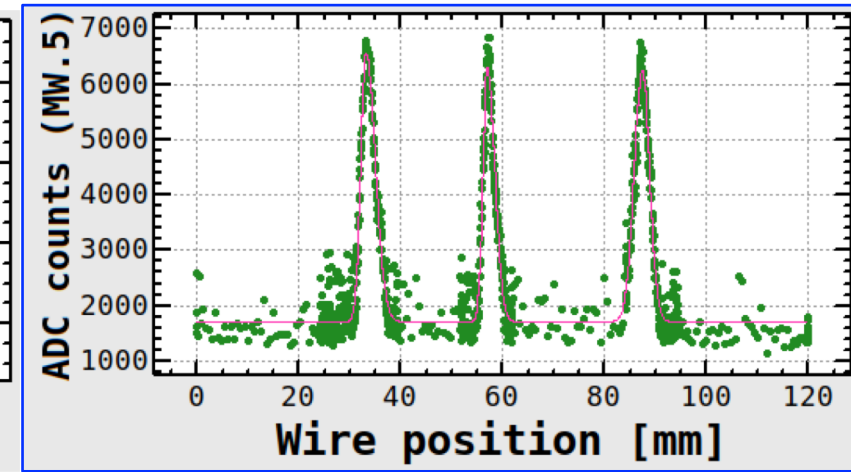
K1=-.224



K1=-.222



K1=-.215



K1 for operation=-.162

K1=-.162